
Photo Viewer Instruction Manual

1 Photo Viewer Functionality:



Front Side – function keys on right-hand side

Key functions

- ❑ MENU key: press three seconds to turn viewer on/off, control menu
- ❑ UP key: Previous
- ❑ DOWN key: Next one
- ❑ USB interface: Used for charging the Viewer battery and image loading/downloading
- ❑ RESET key: Used to reset the player (use end paper clip or dull pin to press)

Battery

Your viewer uses a rechargeable lithium battery which is charge through your computers USB cable.

- ❑ When the battery is low, the Viewer indicates "Low Power"
- ❑ Charge the battery by plugging the USB cable into your computer
- ❑ The Viewer uses USB power and can play with USB power even without a battery

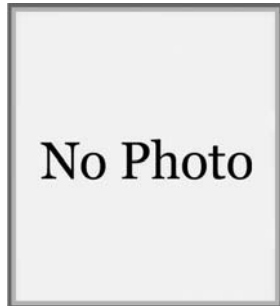
2. Function summary

- ❑ Your Viewer will display a digital album using images files in bmp, jpg file formats
- ❑ Utility functions include: clock, brightness control, and auto power-off
- ❑ The Viewer can store more than 50 pictures
- ❑ Note JPG and BMP files must be preprocessed for viewing using the conversion utility

3. Picture Viewing

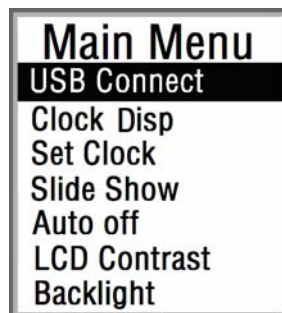


- ❑ You can navigate the various menus by pressing the Menu key
- ❑ Press the Menu key three seconds to turn the Viewer on
- ❑ The up and down keys to display another image.
- ❑ If there are no image files in the Viewer "No Photo" will display

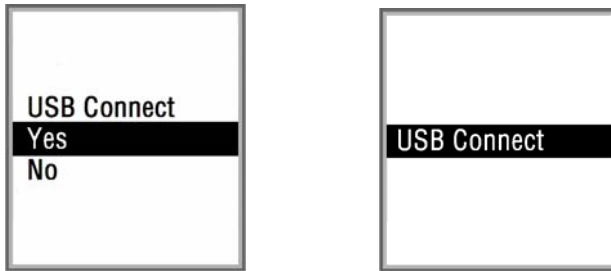


3 Menu functions

- ❑ Press the Menu key to enter into menus
- ❑ Menu selections include USB Connect, clock display, set clock, slide show, Auto off, LCD contrast, backlight
- ❑ Press the up or down keys to highlight a function
- ❑ Press The Menu key to expand upon that feature

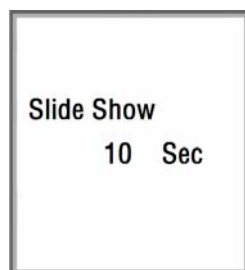


3.1 USB Connect



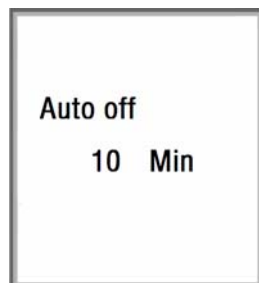
- ❑ Connect the USB cable, press the MENU key to enter menus, Press up/down key to chose.
- ❑ Chose Yes to connect to your PC via USB
- ❑ Chose No and press MENU to quit

3.2 Slide Show



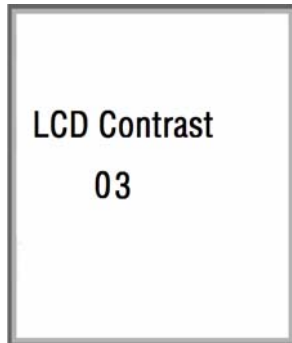
- ❑ Chose slide show, press Menu to enter setup
- ❑ Press up/down key to adjust slide interval time between 0 and 15 seconds
- ❑ Press MENU to quit

3.3 Automatic Power-Off



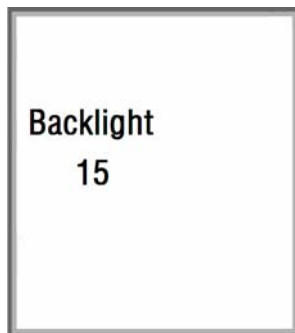
- ❑ Chose auto off, press Menu key to enter setup
- ❑ Press up/down keys to adjust time from 0 to 30 minutes
- ❑ If you select 00 the Viewer will not auto power off.
- ❑ Press Menu to quit

3.4 LCD Contrast



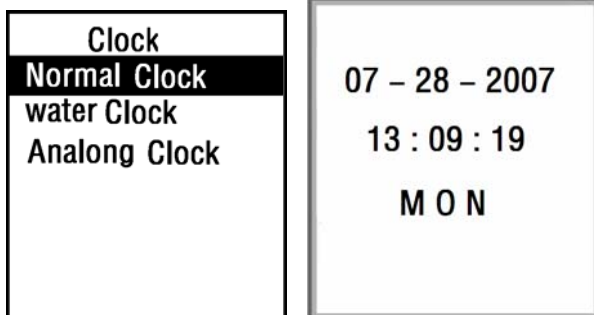
- ❑ Chose LCD contrast, press Menu to enter setup
- ❑ Press up/down key to adjust the LCD contrast, ranging from 01 to 06
- ❑ Press MENU key to quit

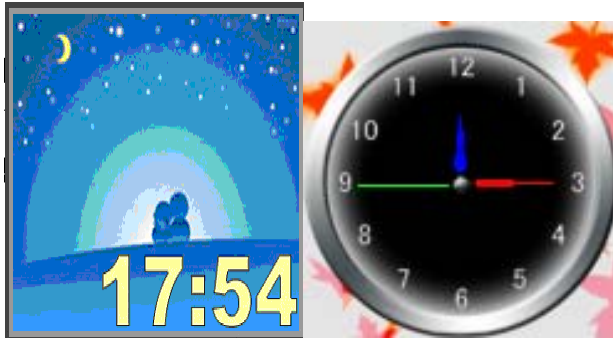
3.5 Backlight



- ❑ Chose backlight, press Menu to enter
- ❑ Press up/down to adjust backlight, ranging from 01 to 21
- ❑ Press MENU key to quit

3.6 Clock Display





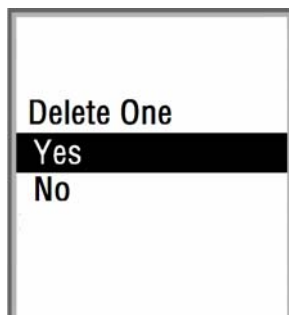
- ❑ Chose display clock, press Menu to enter
- ❑ Press Menu key to quit

3.7 Setting the Clock



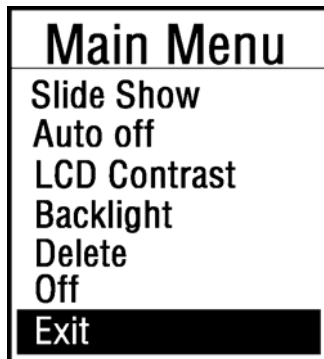
- ❑ Chose set clock, press Menu to enter
- ❑ Press menu to chose date, press up/down key to adjust
- ❑ Press MENU key to quit

3.8 Delete One Image



- ❑ Chose delete, press menu to enter
- ❑ Press up/down to choose Yes, press Menu to confirm delete
- ❑ Press up/down to choose No, press menu to confirm, quit

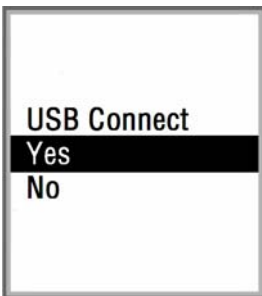
3.8 Exit



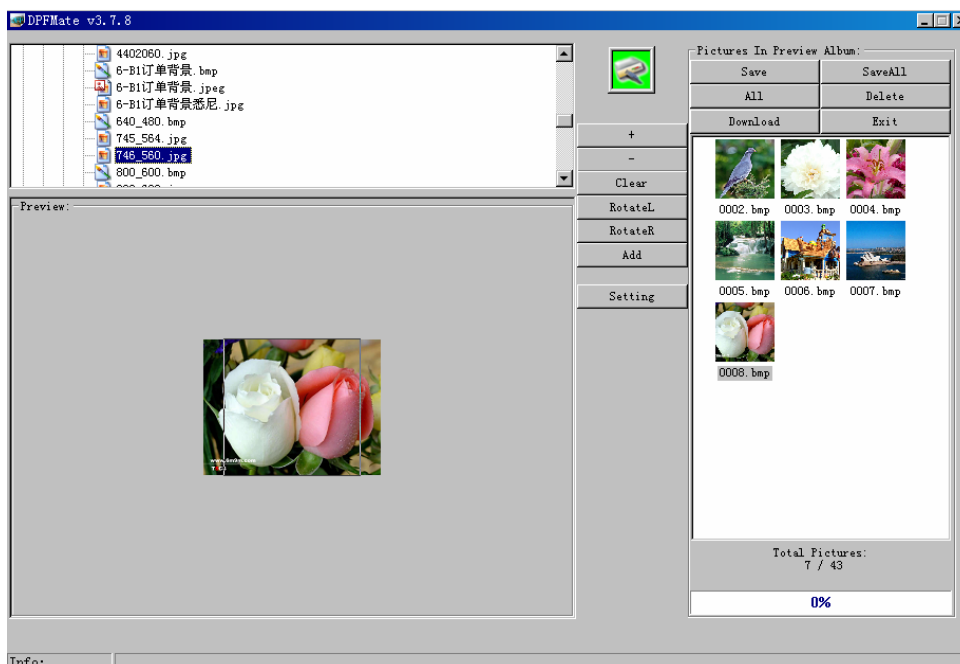
- Chose exit, press menu key to quit;

4 Image Conversion tool

This tool is used to re-format images so they can be displayed on the Viewer. Plug Viewer into your PC, chose USB connect, press menu key to confirm:



- This will open the conversion tool:



- ❑ Select the image you want to convert, edit the picture: (confirm the player is connected to your PC



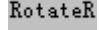
Green indicates a connection



Red is to unplug the player



ZOOM IN, ZOOM OUT, CHOSE picture;



Rotate your picture clockwise or counter-clockwise



trim your image.



chose all images



delete the images you have selected



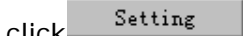
save the images in the Viewer to your PC



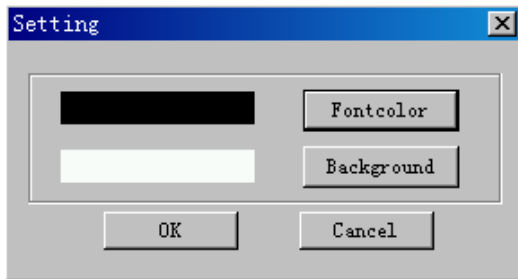
save all the images in the Viewer to your PC



quit.



to change the color of the font in the menu, and the color of the background;



chose the font color

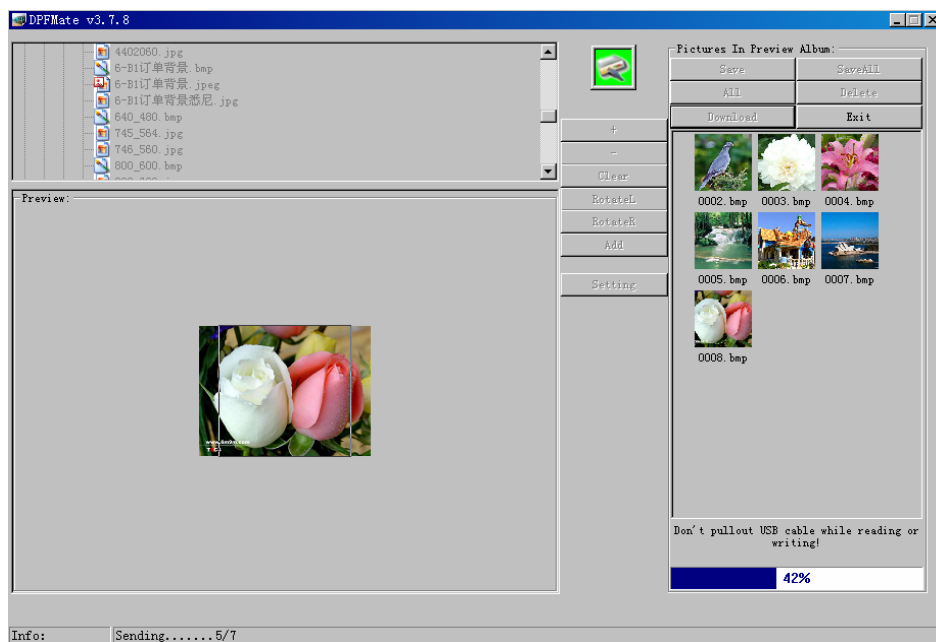


chose the menu background color



Click the key to convert images for viewing in the Viewer

convert all images click "Down" key to download images to Viewer



5 Specifications

Exterior	46.3 * 15.5 * 69 mm
Screen:	1.44 inch CSTN-LCD
Power	3.7V Li-on battery
Picture format	JPG, BMP